

# SSS MODEL E-1 EDGER



## Operating & Maintenance Instructions

### Introduction

#### READ THIS BOOK

This operator's book has important information for the use and safe operation of this machine. Read this book carefully before starting the machine. Keep this book and tell all operators to read the book. If you do not follow the instructions, you can cause an injury, or damage equipment, furniture or buildings.

All directions given in this book are as seen from the operator's position at the rear of the machine.

Carefully inspect all components to insure that there is no concealed freight damage. If such damage is discovered, file a "CONCEALED DAMAGE REPORT" immediately with the delivering carrier.

FOR YOUR CONVENIENCE, RECORD THE MACHINE MODEL AND SERIAL NUMBERS HERE:

MODEL \_\_\_\_\_

SERIAL \_\_\_\_\_

# OPERATING AND MAINTENANCE

**⚠ WARNING:** For safe operation of this machine, follow the instructions given in this booklet and the training given by your supervisor. Failure to do so can result in personal injury and/or damage to machine and property!

**DO NOT OPERATE MACHINE IN AN EXPLOSIVE ENVIRONMENT.**

## Operating

**This model is intended for commercial use.**

Examine the machine after unpacking for any sign of damage which may have occurred during shipment. If any damage is observed, please notify the freight company and request an inspection for filing a claim. **IF IN DOUBT, ASK YOUR SUPERVISOR.**

To prepare the machine for operation, make sure it is of the correct voltage and properly assembled. **IF IN DOUBT, ASK YOUR SUPERVISOR.**

Your new floor machine operates in the normal side-to-side motion of a conventional single disk machine. Be prepared before starting by removing all obstructions or other obstacles in the area which is to be cleaned. Also check the proper application recommendations and procedures found on the label of your cleaning or finish materials. **CALL YOUR SUPERVISOR IF IN DOUBT.**

**⚠ WARNING:** Never use this machine with flammable or explosive material.

## For Scrubbing or Polishing

Select the correct floor pad or brush (your supplier can help you). **IF IN DOUBT, ASK YOUR SUPERVISOR.**

**⚠ NEVER OPERATE THE MACHINE WITHOUT THE FLOOR PAD OR BRUSH INSTALLED!**

To properly attached the brush or pad, **UNPLUG THE FLOOR MACHINE**, lay the machine on its side and re-

move the screw in the bottom of the drive adaptor. Position the brush or pad on the drive adaptor. Assemble the attachment screw and tighten.

To operate this machine connect only to a U/L approved three wire #18-3 or larger gauge extension cord. Position the adjustable handle in a comfortable position. Start the machine by depressing the trigger switch in the handle. The machine will glide sideways over the floor by a slight raising and lowering of the handle. Raise the handle slightly to go left, or lower the handle slightly to go right. Releasing the trigger switch stops the machine.

If using scrubbing pads we recommend you **DO NOT USE BLACK PADS** with this unit due to possible motor overloading.

## Maintenance

Store the machine in a clean dry area. Wipe the entire machine and cord down with a clean cloth. Check the cord and plug for nicks, cuts or damage. Report these to your supervisor for correction. Remove the pad or brush and clean thoroughly.

**NOTE:** If the brush is left on the unit when not in use, do not store with machine weight on the brush, to prevent brush damage and reduce wobble problems. Either remove the brush or support the unit on a hook while in a storage position.

**⚠ WARNING!** Always disconnect the machine's electrical plug from the electrical outlet before performing any service, maintenance, pad changing or inspection of the machine.

The motor is lubricated for life under normal use. No oiling or greasing is necessary.

If you have any questions regarding maintenance of your floor machine, **ASK YOUR SUPERVISOR.**

# OPERATOR AND SAFETY INSTRUCTIONS

To assure the safe operation of this machine, you must read and understand all warnings and instructions in this book. If you do not understand, ask your supervisor.

**WARNING: If you do not follow the instructions given in a warning, you or other persons could be injured, or damage could occur to the machine and/or property.**

1. You must be trained to operate this machine. This machine is to be operated for its intended use only.
2. Do not operate this machine unless it is completely assembled.
3. Do not connect this machine to improper voltage. Always use a 3-wire grounded electrical supply. See electrical section below.
4. To prevent electrical shock, always disconnect the electrical plug of the machine from the electrical outlet before performing any repairs, maintenance or cleanup and when leaving the machine unattended.
5. To prevent electrical shock, keep the machine surface dry. Do not immerse or subject to rain. Store the machine in a dry building area. Clean the machine with a clean dry cloth only.
6. Do not use this machine near flammable liquids, solvents, gas, vapors or dust. Do not use flammable liquids to clean this machine.
7. Maintenance or repairs to this machine must be performed by qualified service personnel.
8. Avoid damage to the machine's electrical cord. Always lift the machine over the cord. Do not run the machine over the electrical cord.
9. If warning or instruction labels are missing or damaged, order new replacement labels from your local SSS distributor.

## WARNING! Electrical Grounding Instructions

### Grounding Instructions

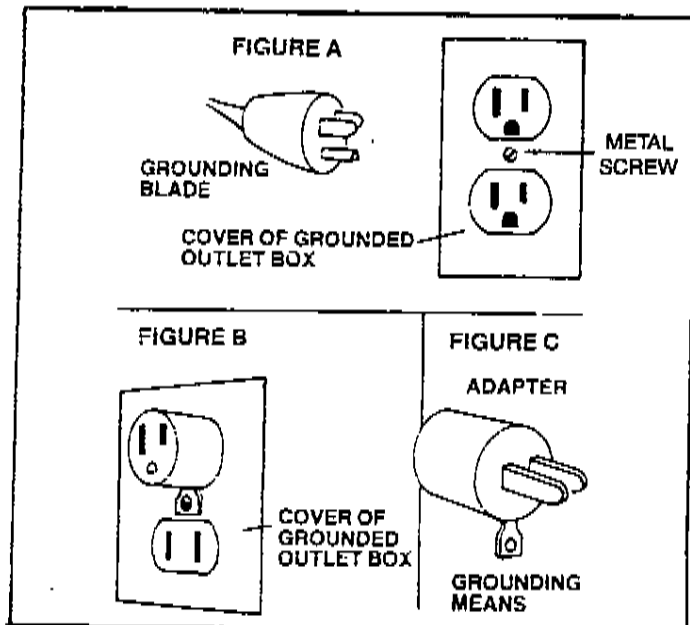
This machine must be grounded while in use to protect the operator from electric shock. The machine is equipped with an approved three-conductor cord and three-prong grounding-type plug to fit the proper grounding type receptacle (shown in figure A). The green (or green and yellow) conductor in the cord is the grounding wire. Never connect the green (or green and yellow) wire to a live terminal. This machine is to be used on an electrical circuit of 115 volts of 60 cycles.

An adaptor, figures B and C, is available for connecting plugs as shown in figure A to two-prong receptacles. The green-colored rigid ear, lug, etc., must be connected to a permanent ground such as a properly grounded outlet box.

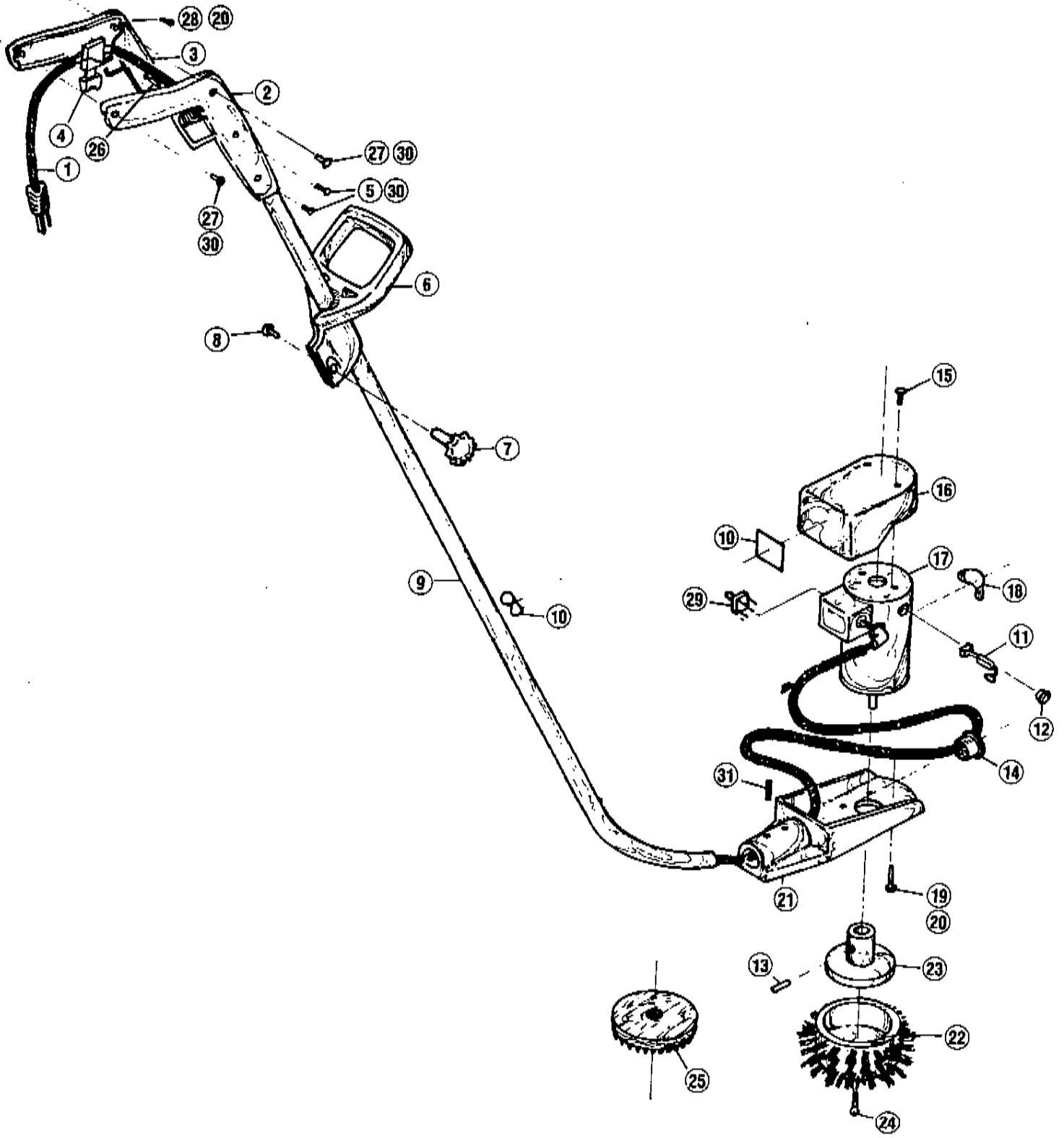
#### Extension Cords

Use only heavy duty extension cords marked **Type S, SO, ST or STO No. 18 AWG or larger gauge listed** extension cords that have a 3-blade grounding plug, and a 3-slot receptacle that will accept the plug on the product. To avoid possible risk of electric shock, do not use a damaged extension cord. Examine extension cord before using and replace if necessary. Always disconnect the cord from the wall receptacle before disconnecting the products from the extension cord.

When servicing, refer to qualified service personnel only. Use only identical replacement parts.



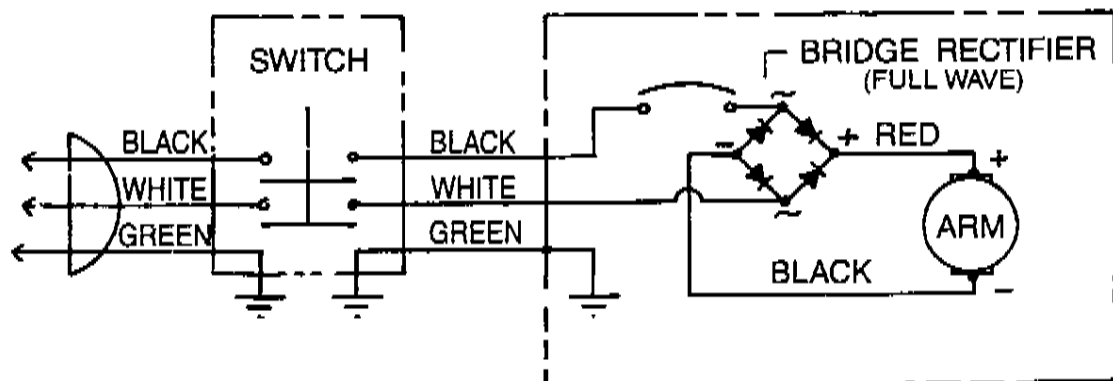
**NOTE:** Do not use adaptors shown in figures B & C in Canada.



# SSS EDGER

ITEM	PART NO.	DESCRIPTION	NO. REQ'D.
1	908031	Power Cord	1
2	513957	Handle - Right	1
3	513958	Handle - Left	1
4	911064	Switch - Trigger	1
5	962038	Screw - #6-32 x 3/8 Pan Hd.	4
6	513959	Handle - Adjusting	1
7	515050	Knob - Fluted	1
8	962037	Bolt - 5/16-18 x 1-3/4 Carriage	1
9	519050	Handle Tube	1
10	515150	Label - Warning	2
11	510951	Brush - Motor	2
12	511551	Cap - Motor Brush	2
	512352	Cover - Brush Cap Dust	2
13	962005	Screw - 1/4-20 x 3/8 Set	1
14	511150	Bushing - Snap	1
15	962029	Screw - #10-24 x 1/2 Pan Hd.	2
16	512351	Cover - Motor	1
17	515250	Motor - 1/8 H.P. DC - 115V	1
18	515153	Label - SSS	1
19	962019	Screw - #10-32 x 5/8 Pan Hd.	4
20	980015	Washer - #10 Ext Tooth Lock	6
21	511351	Base - Motor	1
22	510950	Brush - Scrub	1
23	510250	Adaptor - Motor	1
24	962040	Screw - 5/16-24 x 1-1/4 Flat Hd.	1
25	515950	Pad Driver	1
26	518250	Spacer Handle	2
27	962039	Screw - #6-32 x 5/8 Pan Hd.	2
28	962015	Screw - #10-32 x 3/8 Pan Hd.	2
29	911066	Rectifier - Motor	1
30	980016	Washer - #6 Ext Tooth Shakeproof	6
31	962042	Screw - 1/4-20 x 1/2 Set	2

## Wiring Diagram



# TRIPLE S FLOOR MACHINE LIMITED WARRANTY

The Triple S Edger, which has been manufactured, tested and inspected in accordance with specific engineering requirements, is **WARRANTED** by the manufacturer to be free from defects in workmanship and materials.

This warranty is, however, subject to the following qualifications, conditions and limitations which are set forth to provide you and all users of the Triple S Edger with information concerning the duration, extent, availability and applicability of this Limited Warranty, the procedure to be taken to obtain its performance and other information concerning the manufacturer's warranty policy.

## 1. TO WHOM EXTENDED AND DURATION OF ITEMS COVERED

This warranty extends to the original consumer purchaser from the date it was purchased for the period of one year.

## 2. PARTS NOT COVERED BY WARRANTY

Certain parts of the Triple S Edger require replacement in the ordinary course of use due to normal wear by reason of their characteristics. This warranty does not cover normal wear items such as electrical cables, carbon brushes, pad drivers, or scrub brushes.

## 3. EXCEPTIONS AND EXCLUSIONS FROM WARRANTY

The Triple S Edger is required to be used on electric current as indicated on the name plate. Otherwise damage, defects, malfunctions or other failures of the Triple S Edger arising from use on electric current not as indicated are excepted and excluded from this warranty.

Defects, malfunctions, failure or damage of the Triple S Edger caused by improper, unreasonable or negligent use or abuse while in the possession of the consumer are likewise excluded from this warranty.

If repair is done on your Triple S Edger by anyone other than those below designated as authorized to perform such work without first having obtained factory instructions, the manufacturer, at its sole option, may determine that this warranty will not apply and that reimbursement for such repair will not be made because of the failure to comply with such factory specified instructions.

## 4. PROCEDURE TO BE TAKEN TO OBTAIN PERFORMANCE OF WARRANTY

To secure repair of the Triple S Edger or any warranted parts under this warranty, the following procedure should be taken:

The inoperative Triple S Edger or warranted parts together with satisfactory evidence of the purchase date, must be delivered with shipping and delivery charges prepaid to the Dealer from whom purchased.

If you are unable to locate the Dealer, you may write or otherwise communicate with **Standardized Sanitation Systems, Inc., 141 Middlesex Turnpike, Burlington, Massachusetts 01803**, for instructions before repair service is performed by anyone else. In such event Triple S will provide either the location of a closely available Triple S distributor Service Department or other factory instructions.

Upon compliance with the above procedure, all warranted defects will be repaired, at no additional charge or costs to the consumer, and the repaired product returned to the consumer, with all shipping and delivery charges prepaid.

In following the procedures above set forth, **PLEASE MAKE CERTAIN** to state the Triple S model, type and serial number as shown on the name plate of the Triple S Edger.

## REPLACEMENT

In the event of the defect, malfunction or failure of your Triple S Edger or any warranted part to conform with this warranty, the manufacturer may at its sole option and own expense, replace the Triple S Edger or any warranted part with another new identical or reasonably equivalent model or part in lieu of repairing the defect.

## 5. NO REFUND OF PURCHASE PRICE

Triple S will not, as a matter of its warranty policy, refund the consumer's purchase price.

## 6. WARRANTY REGISTRATION CARD FOR YOUR TRIPLE S Edger AND REQUESTS FOR INFORMATION

Please fill out the warranty registration card accompanying your Triple S Edger, giving complete information as requested on the card, and return to Standardized Sanitation Systems, Inc.

This warranty is in lieu of all other expressed or implied warranties.

## E-1 EDGER PARTS REVISION

ITEM	PART NUMBER	DESCRIPTION	QTY
*1	908048	Power Cord	1
*2	513950	Handle-Right	1
*3	513951	Handle-Left	1
4	911064	Switch-Trigger	1
*5	962145	Screw	4
*6	513971	Handle, Adjusting	1
7	515050	Knob, Fluted	1
*	980007	Washer, 5/16 Flat	1
8	962037	Bolt, 5/16-18x1-3/4 Carriage	1
*9	519051	Handle Tube	1
10	515150	Label, Warning	2
11	510951	Brush, Motor (1/4" Square-Leeson Mtrs)	2
	510961	Brush, Motor (5/16" Square-Met Mtrs)	
12			
13	962005	Screw, 1/4-20x3/8 Allen Set	1
14	511150	Bushing, Snap	1
15	962029	Screw, 10-24x1/2 PHP	2
*16	512355	Cover, Motor	1
*17	515257	Motor-Drive, 1/8 HP-DC, 115V	1
	515258	Motor-Drive, 1/8 HP-DC, 230V	1
*18	635102	Label-SSS	1
19	962019	Screw, 10-32x5/8 PHP	4
20	980015	Washer, #10 Ext Tooth Lock	6
*21	511359	Base, Motor	1
22	510950	Brush, Scrub	1
*23	510252	Adaptor, Motor	1
24	962040	Screw, 5/16-24x1-1/4 Flat Hd.	1
*	980037	Washer, 5/16 Ext Tooth	1
*25	512760	Disc, Pad Drive	1
*	518561	Support, Pad Holder	1
26	518250	Spacer, Handle	2
*27		Replaced with Item 5	
28	962015	Screw, 10-32x3/8 PHP	2
29	911066	Rectifier, Motor (for 115 or 230 Volt Motors)	1
*30		Replaced with Item 5	
31	962042	Screw, 1/4-20x1/2 Allen Set	2

\* Denotes Items with Part Number Changes