



F4558

#20 UHS Combo Cleaner Maintainer

PRODUCT DESCRIPTION:

#20 UHS Combo Cleaner/Maintainer is a revolutionary, labor saving product. Designed for daily use on resilient and hard floor surfaces. Revitalizes the finish base, builds gloss and reduces labor cost by eliminating the use of multiple products (traditional cleaners and restorers) and additional steps (separate deep cleaning and restoration steps).

FEATURES:

Revitalizes the Gloss:

Restores flexibility to the finish, allowing it to respond to burnishing and resulting in improved performance. Leaves the floor with a "just finished" appearance.

Cost Effective:

One product replaces multiple products and simplifies training. Use in maintenance systems using automatic scrubbers or mop and bucket applications. Saves labor and training time. Reduces stripping and recoating frequency.

Reduces Labor:

Reduces the frequency of stripping and scrub/ recoating to save significant time and labor. Cleans and maintains the floor finish without trapping dirt which can build up and discolor the floor finish.

User Friendly:

One product system provides simplicity and ease of training. Leaves behind a fresh, clean fragrance.

PRODUCT SPECIFICATIONS:

pH	9.0 ± 1.0
Appearance	Clear Straw Color Liquid
Fragrance	Citrus
Solubility in Water	Complete
Flash Point	None

INGREDIENTS (CAS#):

Water	7732-18-5
NJ TSRN	100555-5001
NJ TSRN	100555-5002
Nonyl phenoxy poly (ethyleneoxy) ethanol	9016-45-9

DILUTIONS	HEALTH	FLAMMABILITY	REACTIVITY	
CONCENTRATE CONCENTRATOR	NFPA 2 HMIS	NFPA 2 HMIS	NFPA 0 HMIS	
(1:128 RATIO) (1:128 RAZON)	NFPA 1 HMIS	NFPA 1 HMIS	NFPA 0 HMIS	
(1:256 RATIO) (1:256 RAZON)	NFPA 0 HMIS	NFPA 0 HMIS	NFPA 0 HMIS	
PROPORCIÓN	SALUD	INFLAMABILIDAD	REACTIVIDAD	
0	1	2	3	4
Minimal Mínimo	Slight Mínimo	Moderate Moderar	Serious Grave	Severe Drástico

DATA TECH SHEET

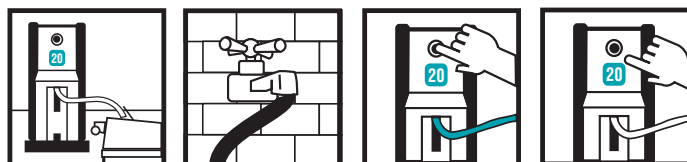
#20 UHS Combo Cleaner Maintainer Lightning Blend System

DIRECTIONS

USE INFORMATION:

Dilute the product at 1:128 (one ounce per gallon of water). The **Lightning Blend** is preset to deliver this ratio of mixed solution to an autoscrubber. Product can be diluted at 1:256 (1/2 ounce per gallon of water) for use in a mop and bucket application.

UNIT DIRECTIONS



1. PLACE

2. TURN ON

3. PUSH

4. RELEASE

UNIT DIRECTIONS:

1. **PLACE** discharge tube into an autoscrubber (1oz./gallon).

PLACE discharge tube into a mop bucket fill until half full and then finish filling with plain water (1/2 oz./gallon).

2. **TURN ON** the water supply.

3. **PUSH** in the button to dispense the solution.

4. **RELEASE** the button to stop the flow of solution.

DIRECTIONS FOR USE:

AUTOSCRUB: Place the Lightning Blend discharge tube directly into the autoscrubber and fill directly from the proportioner. Auto scrub with red or white floor pads. Burnish when dry for an even higher gloss.

MOP ON: Place the Lightning Blend discharge tube directly into the mop bucket. Dip the mop into the bucket and wring out the excess diluted solution. Mop the floor. Change the solution when it becomes dirty. No rinsing is required. To "pop the gloss", burnish the floor when dry.

FIRST AID:

If in eyes or on skin, immediately flush with plenty of water for at least 15 minutes. Get medical attention. **If swallowed,** get medical attention. NEVER GIVE ANYTHING BY MOUTH TO AN UNCONSCIOUS PERSON.

HANDLING AND STORAGE:

SUGGESTED STORAGE TEMPERATURE: Store inside at 40-90°F. **SPECIAL HANDLING AND STORAGE:** Handle in accordance with good industrial hygiene and safety practices. These practices include avoiding unnecessary exposure and removal of material from eyes, skin and clothing. Store in a cool, dry, ventilated area. Protect from freezing. Thoroughly rinse empty containers. **KEEP OUT OF REACH OF CHILDREN.**

PERSONAL PROTECTION:

Respiratory Protection: Not needed in normal use.

Ventilation: Use with adequate ventilation.

Eye Protection: Safety glasses are required.

Protective Gloves: Protective gloves are recommended.

Other Protective Clothing or Equipment: Wear clothing as necessary to prevent skin contact.



TRANSPORTATION INFORMATION:

U.S. DOT - Proper Shipping Name: Not Regulated by DOT.

Marine Pollutant: No

MSDS FAX RETRIEVAL
Read MSDS before using this product

800-551-0101

OBTENCION DE HDSM POR FAX
Leer la HDSM antes de utilizar este producto

FOR CHEMICAL EMERGENCY
SPILL, LEAK, FIRE, EXPOSURE OR ACCIDENT
CALL CHEMTREC DAY OR NIGHT

800-424-9300

PARA EMERGENCIAS QUIMICA DERRAMES,
ESCAPES, FUEGO, EXPOSICION O ACCIDENTE
LLAMAR DE DIA O DE NOCHE A CHEMTREC

TECH HOTLINE
800-810-4829
LINEA DE TECNICA