

# QUICK START GUIDE



Thank you for purchasing your new Eureka vacuum!



Before returning, call  
Eureka Customer Service

**HELPLINE**

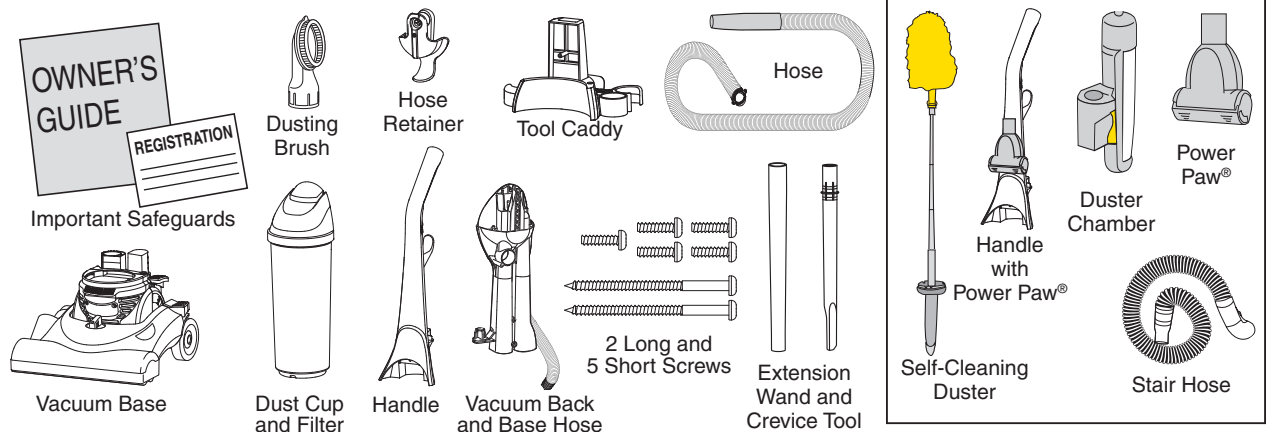
**1-800-282-2886**

8 a.m. to 7:30 p.m. (CST), Monday - Friday  
10 a.m. to 6:30 p.m. (CST), Saturday - Sunday

[www.eureka.com](http://www.eureka.com)

**STEP 1**

## What's in the carton



**SPECIAL FEATURES**  
Available on some models

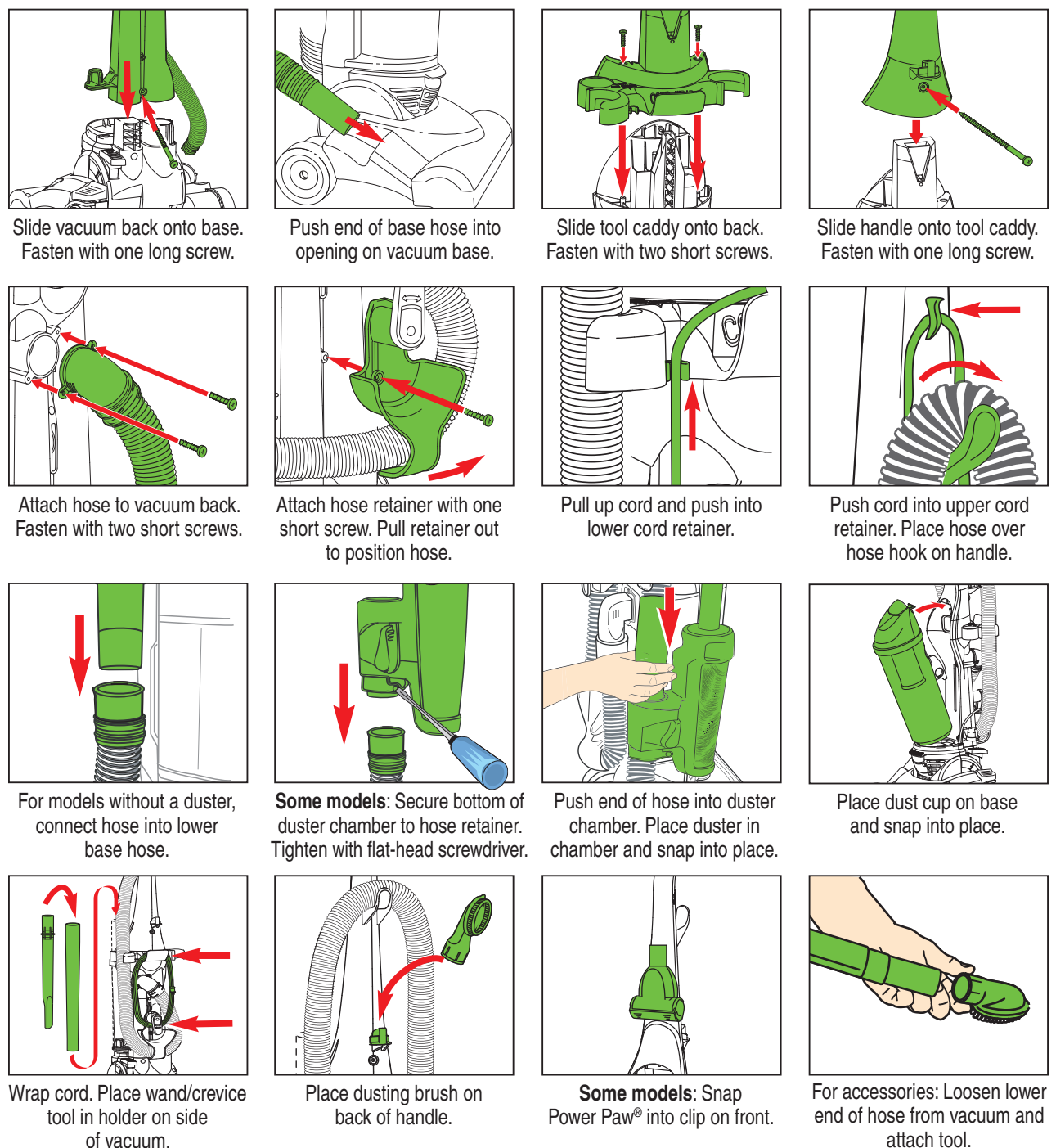
**STEP 2**

## Easy assembly

**⚠ READ ALL INSTRUCTIONS BEFORE USING THIS VACUUM CLEANER.**  
Moving parts! Assemble the vacuum cleaner before using.

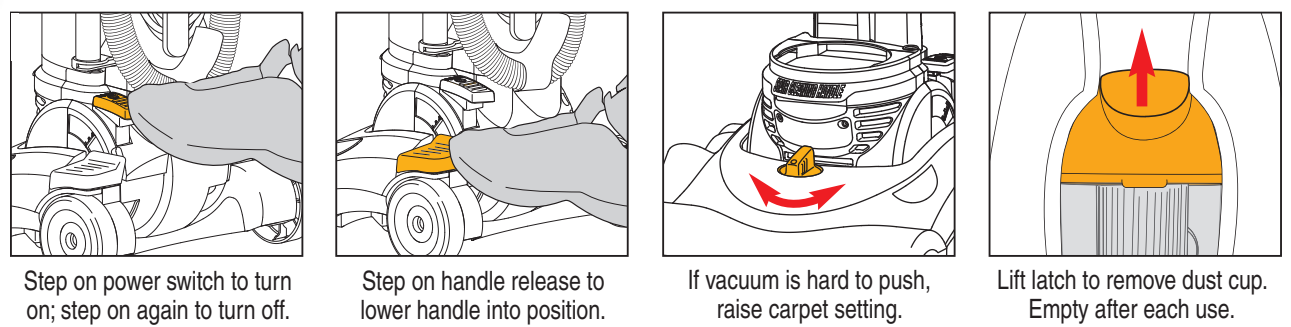


**+**  
Use Phillips and flat-head screwdrivers.



**STEP 3**

## Get ready to vacuum



**PROBLEM SOLVING** Refer to Owner's Guide. **MAINTENANCE SCHEDULE** Refer to back of dust cup or Owner's Guide.